



# WATER MUNICIPALITY SUPPORT



We support all sized districts, metropolitan areas, and rural communities with and without contract agreements, including:

Wastewater Treatment Plants

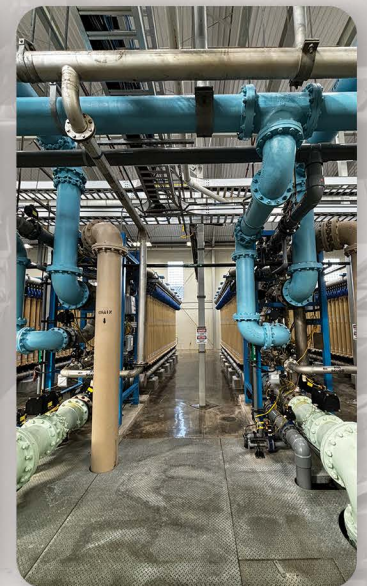
Freshwater Filter Plants

Distribution Pumping Stations

Lift Stations & More

## Types of Equipment Serviced

- AC motors
- Submersible & centrifugal pumps
- UL, explosion-proof certified motors
- Vertical & horizontal motors
- Ball & Babbitt bearing machines
- Solid & hollow shaft motors
- Submersible & centrifugal pumps
- Synchronous machines
- Substation transformers
- Distribution transformers
- Circuit breakers
- Gearboxes
- Centrifugal blowers
- LV, MV, & HV switchgear



## Types of New Product Manufacturing

- OEM & specialty transformers up to 10 MVA
- Medium voltage custom switchgear
- Switches, breakers, starters, & enclosures

[SWELECTRIC.COM/WATER](https://www.swelectric.com/water)

[info@swelectric.com](mailto:info@swelectric.com) | 833.YOUR.SWE

Worldwide shipping & services from our shops located in Oklahoma, Tennessee, & Ohio.

Scan To  
Learn More!



## Motor Services

- Motor repair, reconditioning, & rewind up to 20,000 HP
- Run motors up to 6,600 Volts
- Vibration analysis with report
- Alignments with report
- MCE PdMA testing with report
- Authorized warranty repair for most major brands
- Free motor pick-up & delivery
- Climate-controlled motor storage with crane and trucking access

- New product available for purchase from all manufacturers (ABB/Baldor, US Electric, TECO/Westinghouse, Siemens, etc.)

### AC Motors & Submersible Pumps

- Rewinding
- Bearing & vibration repairs
- Reconditioning, clean-up, & bearing change
- Mechanical inspection & troubleshooting
- Electrical testing
- Power cable & lifting chain replacement
- New product replacements

## Transformers, Switchgear, Breaker, & Additional Services

### Transformer Services

- Custom product manufacturing
- Relocation
- Testing
- Internal inspections
- Regasketing
- Bushing replacement
- Oil processing

### Breaker Services

- Maintenance, repair, & retrofits
- Testing

### Switchgear Services

- Custom product manufacturing
- Testing
- IR thermal analysis
- Particle discharge analysis
- Maintenance

- Retrofits & retrofills
- Commissioning & decommissioning
- Relocation

### Other Services

- Protective relay testing
- Cable testing
- Ground grid testing
- Ground fault protection

**SWELECTRIC.COM/WATER**  
info@swelectric.com | 833.YOUR.SWE

Worldwide shipping & services from our shops located in Oklahoma, Tennessee, & Ohio.

**Scan To  
Learn More!**

